



## SACRAMENTO REGIONAL COUNTY SANITATION DISTRICT

RFB #8342 Chiller Base Demolition and Rehab

### ADDENDUM No. 3

**RECEIPT OF THIS ADDENDUM MUST BE ACKNOWLEDGED IN THE SPACE PROVIDED  
ON THE COST RESPONSE.**

Addendum No. 3 is hereby made part of the Regional San RFB #8342.

Dated: 03/02/2020

A handwritten signature in blue ink, appearing to read "Ami Patrick", is written over a horizontal line.

Ami Patrick, PE  
Associate Civil Engineer  
Regional San

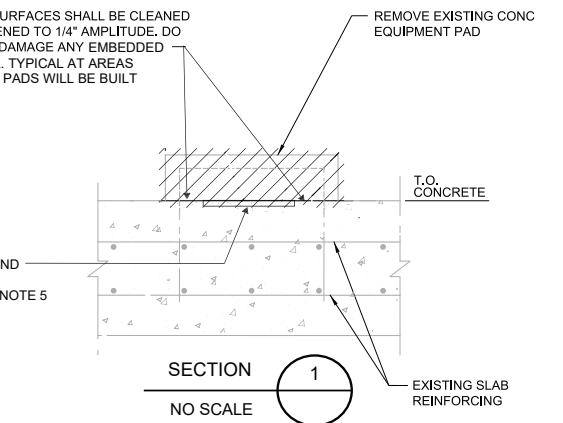
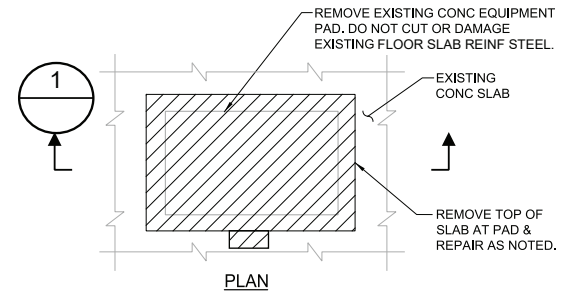
**ADDENDUM No. 3**

RECEIPT OF THIS ADDENDUM MUST BE ACKNOWLEDGED IN THE SPACE PROVIDED ON THE COST RESPONSE.

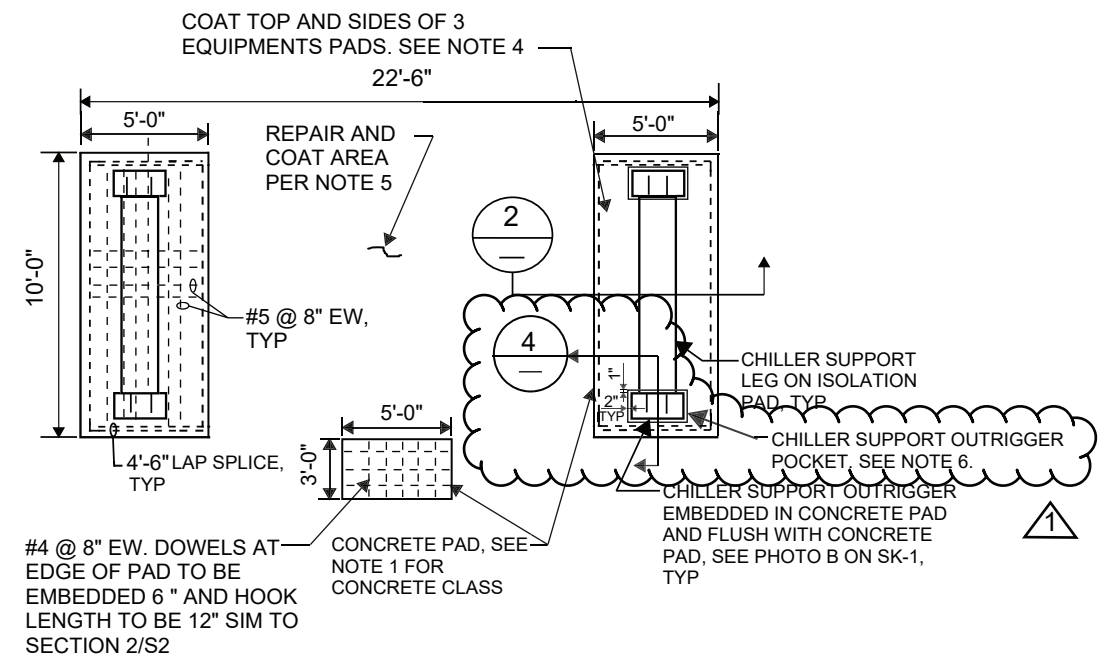
<b>Addendum Item</b>	<b>Section and Page or Drawing No.</b>	<b>Location and Description of Change</b>
3.001	Added detail for outrigger attachment.	Chillers outriggers shall be attached to concrete per detail 4 on new sheet 5 of 5.
3.002	Added specification section 03 60 00.	Specification Section 03 60 00 "Grouting" included with Addendum No. 3.

This Addendum No. 3 shall be incorporated into, and made part of, the contract documents for RFB #8342 Chiller Base Demolition and Rehab.

**\*\*END OF SECTION\*\***



**DEMOLITION DETAIL**  
NO SCALE  
A  
S1

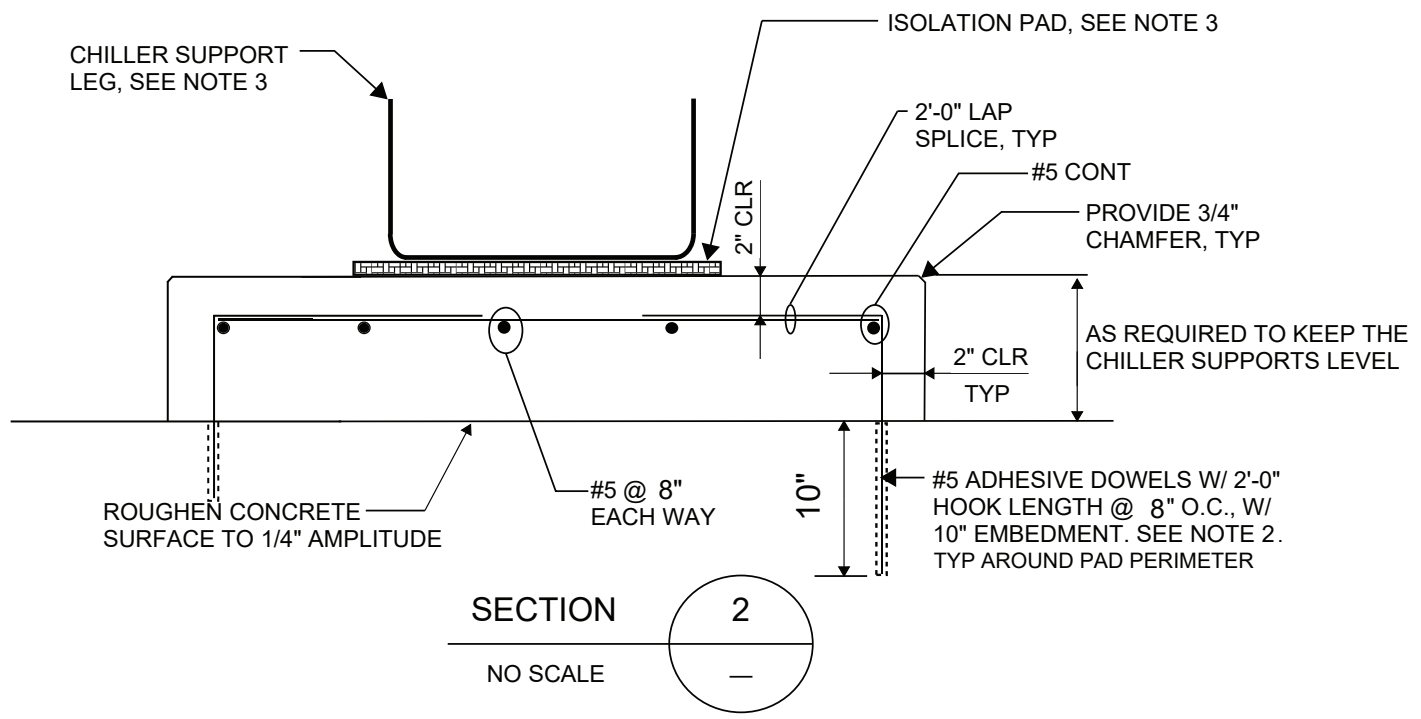


**EQUIPMENT PAD DETAIL**  
NO SCALE  
B  
S1

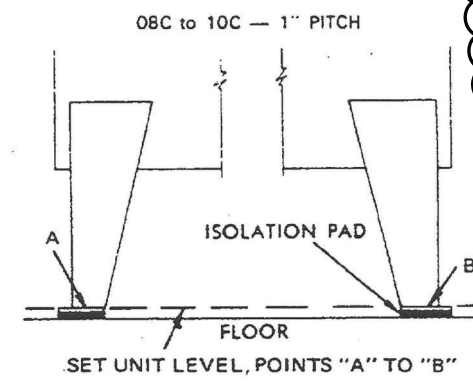
**NOTES:**

1. CONCRETE FOR THE NEW EQUIPMENT PADS SHALL BE CLASS 2 IN ACCORDANCE WITH SPECIFICATION SECTION 03 30 00.
2. USE NON DESTRUCTIVE SCANNING METHODS TO IDENTIFY EXISTING SLAB REINFORCING STEEL BEFORE DRILLING HOLES FOR DOWELS. ADHESIVE FOR DOWELING SHALL BE HILTI RE 500 V3; SIMPSON STRONG-TIE SET XP; OR APPROVED EQUAL.
3. CHILLER SUPPORT LEGS SHALL BE LEVEL ON THE ISOLATION PADS WHEN MEASURED FROM THE LEG AT ONE END OF THE EQUIPMENT TO THE LEG AT THE OPPOSITE SIDE. SEE DETAIL 3 ON THIS SHEET. REUSE EXISTING ISOLATION PADS.
4. AFTER CONCRETE HAS CURED FOR 28 DAYS, APPLY COATING SYSTEM E/HPA (EPOXY MASTIC/ HIGH PERFORMANCE ACRYLIC) IN ACCORDANCE WITH SPECIFICATION SECTION 09 90 00.
5. CONCRETE REPAIR MATERIAL TO BE SIKA SIKATOP 111 PLUS; BASF MASTEREMACO T 302; OR APPROVED EQUAL. SURFACE PREPARATION, INSTALLATION, AND CURING TO BE IN CONFORMANCE WITH MANUFACTURER'S INSTRUCTIONS. AFTER CONCRETE REPAIR MATERIAL HAS CURED FOR AT LEAST 7 DAYS, APPLY COATING SYSTEM E/HPA (EPOXY MASTIC/ HIGH PERFORMANCE ACRYLIC) IN ACCORDANCE WITH SPECIFICATION SECTION 09 90 00.

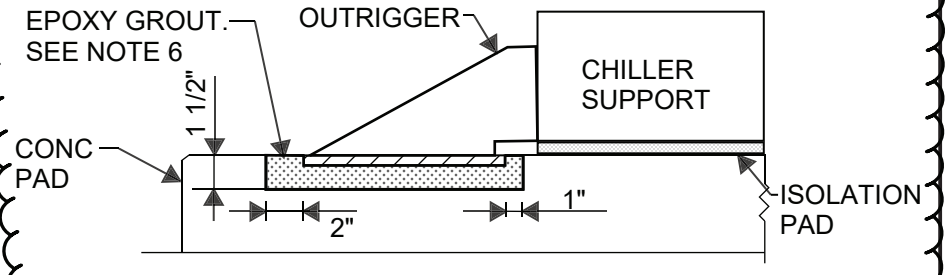
6. FORM A POCKET IN THE CONCRETE PADS FOR EACH SUPPORT OUTRIGGER (TOTAL OF 4) TO BE FILLED WITH EPOXY GROUT AFTER THE CHILLER SUPPORTS ARE SET ON THE ISOLATION PADS. THE POCKET SHALL BE 1 1/2" DEEP, 2" LARGER IN PLAN THAN THE OUTRIGGERS ON 3 SIDES, AND 1" LARGER ON THE SIDE NEXT TO THE SUPPORT. EPOXY GROUT SHALL BE IN ACCORDANCE WITH SECTION 03 60 00.



**SECTION**  
NO SCALE  
2



**CHILLER SUPPORT LEG LEVELING DETAIL**  
NO SCALE  
3



**OUTRIGGER POCKET**  
NO SCALE  
4



REVISIONS					
ZONE	REV.	DESCRIPTION	BY	DATE	APP.
△		PER ADDENDUM 3	EQ	02/28/20	

LINE IS 2 INCHES AT FULL SIZE (IF NOT 2"-SCALE ACCORDINGLY)

FILE \_\_\_\_\_  
DRAWN EQ  
DESIGNED EQ  
CHECKED \_\_\_\_\_

**RFB 8342**  
CONTRACT NUMBER

SACRAMENTO REGIONAL COUNTY SANITATION DISTRICT OF SACRAMENTO COUNTY, CALIFORNIA

SACRAMENTO REGIONAL WASTEWATER TREATMENT PLANT ABSORPTION CHILLERS 1 & 2 EQUIPMENT PAD REHABILITATION PROJECT

STRUCTURAL

ABSORPTION CHILLERS 1 & 2 EQUIPMENT PAD DETAILS AND SECTIONS

SCALE  
NO SCALE

DRAWING NUMBER  
S2

SHEET NUMBER  
5 OF 5

*THIS PAGE LEFT BLANK INTENTIONALLY.*

## SECTION 03 60 00

### GROUTING

#### PART 1 -- GENERAL

##### 1.01 GENERAL REQUIREMENTS

###### A. SCOPE:

1. This section specifies grout for uses other than masonry.

##### 1.02 REFERENCES

- A. REFERENCE STANDARDS: The publications referred to hereinafter form a part of this specification to the extent referenced. The publications are referred to in the text by the basic designation only. The latest edition of referenced publications in effect at the time of the bid shall govern. In case of conflict between the requirements of this section and the listed references, the requirements of this section shall govern.

<u>Reference</u>	<u>Title</u>
ASTM C33	Concrete Aggregates
ASTM C40	Test Method for Organic Impurities in Fine Aggregates for Concrete
ASTM C88	Test Method for Soundness of Aggregates by Use of Sodium Sulfate or Magnesium Sulfate
ASTM C117	Test Method for Materials Finer Than 75-Micrometer (No. 200) Sieve in Mineral Aggregates by Washing
ASTM C136	Method for Sieve Analysis of Fine and Coarse Aggregates
ASTMC150	Portland Cement
ASTMC289	Test Method for Potential Reactivity of Aggregates (Chemical Method)
ASTMC494	Chemical Admixtures for Concrete
ASTM C881	Epoxy-Resin-Base Bonding Systems for Concrete
ASTM C1107	Packaged Dry, Hydraulic-Cement Grout (Nonshrink)
ASTMD2419	Test Method for Sand Equivalent Value of Soils And Fine Aggregate
ASTME329	Practice for Use in the Evaluation of Testing and Inspection Agencies as Used in Construction

B. DEFINITIONS: (Not Used)

**1.03 SUBMITTALS**

- A. The following information shall be submitted for review in accordance with the SUBMITTAL PROCEDURES Section (01 33 00):
1. A copy of this specification section, with addenda updates, with each paragraph check marked to show specification compliance or marked to show deviation.
  2. MANUFACTURER'S DATA:
    - a. Epoxy grout
    - b. Adhesive for dowels and anchoring setting
    - c. Current ICC Evaluation Report for adhesives used for dowel and anchor setting.

**1.04 OPERATION AND MAINTENANCE INSTRUCTIONS (NOT USED)**

**PART 2 -- PRODUCTS**

**2.01 MATERIALS**

A. WATER:

1. Water for washing aggregate, for mixing and for curing shall be free from oil and deleterious amounts of acids, alkalies, and organic materials; shall not contain more than 1000 mg/l of chlorides as Cl, nor more than 1300 mg/l of sulfates as SO<sub>4</sub>; and shall not contain an amount of impurities that may cause a change of more than 25 percent in the setting time of the cement nor a reduction of more than 5 percent in the compressive strength of the grout at 14 days when compared with the result obtained with distilled water. Additionally, water used for curing shall not contain an amount of impurities sufficient to discolor the grout.

**2.02 GROUT**

A. EPOXY GROUT FOR EQUIPMENT MOUNTING:

1. Epoxy grout shall be a three-component epoxy resin system, consisting of two liquid epoxy components and an optional inert aggregate component. Each component shall be in separate bags in the correct ratio for job site mixing.
2. Epoxy grout shall be Euclid Chemical Company E3-G or E3-Flowable; Sika Corporation Sikadur 42, Five Star Products, Inc. Five Star DP Epoxy Grout; BASF Masterflow 648 CP Plus; or equal.

**B. ADHESIVE FOR DOWEL AND ANCHOR SETTING:**

1. Adhesive for setting dowels shall be an injectable two-component epoxy adhesive. Adhesive shall be approved for the intended use per the product ICC Report.

Adhesive shall be HIT-RE-500-V3 by Hilti; SET-3G by Simpson Strong-Tie; or equal (equivalent product must have ICC approval for use in cracked concrete).

2. Reinforcing steel dowels shall meet ASTM A615, grade 60, standards.

**PART 3 -- EXECUTION**

**3.01 GENERAL**

- A. Holes required for grouting shall be blown clean. Horizontal holes for grouting shall be drilled at a slight downward angle to facilitate holding the grout until setting is complete. Bolts or reinforcing steel installed in horizontal grout holes shall be bent slightly accordingly. Bonding compound for use with grout is specified in the CAST-IN-PLACE CONCRETE Section (03 30 00). Mechanically mix the grout materials with or without fillers in strict accordance with the manufacturer's instruction. All application of the mixed materials shall be performed within the working life or pot life of the grout system. Unused mixed materials which have reached the end of the working or pot life shall be removed from the job site.

**3.02 INSTALLATION**

**A. EPOXY GROUT:**

1. Epoxy grout shall be used for the bearing surfaces of absorption chiller support outrigger bases, and for built-up surfaces.
2. Mix in complete units. Do not vary ratio of components or add solvent to change consistency of mix.
3. Pour hardener into resin and mix for at least 1 minute and until mixture is uniform in color. Pour epoxy into mortar mixer wheelbarrow and add aggregate. Mix until aggregate is uniformly wetted. Over mixing will cause air entrapment in mix.
4. Cure grouts in accordance with manufacturers' recommendations.
5. Do not allow any surface in contact with epoxy grout to fall below 50 degrees Fahrenheit for minimum of 48 hours after placement.

B. ADHESIVE FOR DOWEL AND ANCHOR SETTING:

1. Epoxy Adhesive shall be used for grouting reinforcing steel holes, and setting reinforcing dowels. Concrete shall be primed in accordance with the grout manufacturer's instructions.
2. Drilling holes and hole drilling equipment:
  - a. Determine location of reinforcing bars or other obstructions with a nondestructive indicator device, and mark locations with construction crayon on the surface of the concrete.
  - b. Do not damage or cut existing reinforcing bars, electrical conduits, or other items embedded in the existing concrete without prior acceptance by Engineer.
  - c. Use electric or pneumatic rotary impact type with medium or light impact drilling equipment.
  - d. Use carbide-tipped drill bits in accordance with ANSI B212-15 unless otherwise recommended by the manufacturer or required as a "condition of use" in the Evaluation Report.
  - e. Clean holes in accordance with the manufacturer's evaluation report.
3. Fill holes with adhesive and insert reinforcing steel dowels in accordance with the evaluation report.

C. WEATHER LIMITATIONS:

1. Work shall not proceed when weather conditions detrimentally affect the quality of patching or bonding concrete. Apply grout materials only when the contact surfaces are prepared and if the atmospheric temperature range and contact surfaces are suitable for the specified type of epoxy adhesive or grout material.

D. CLEANUP:

1. Leave finished work and work area in a neat, clean condition. Remove all spillovers onto adjacent areas to the satisfaction of the District Representative. For epoxy injection system, after the epoxy resin adhesive has cured, the epoxy resin adhesive for sealing cracks and porting devices shall be removed. Clean the substrate in a manner to produce a finish appearance acceptable to the District Representative.



**3.03 TESTING (NOT USED)**

**3.04 TRAINING (NOT USED)**

**\*\*END OF SECTION\*\***

*THIS PAGE LEFT BLANK INTENTIONALLY.*